

# BeamYourScreen – Tutorial for Guests

---

## Join a Session

To join a session, go to [www.BeamYourScreen.com](http://www.BeamYourScreen.com) and click **Join Session**. You can also go to [www.JoinSession.com](http://www.JoinSession.com) and join a session. If you received an email invitation or instant message with a Session URL, just click on that URL to join the session.

BeamYourScreen provides **Intelligent Session Login™** technology that automatically detects your operating system and the availability of Java and determines the best possible connection method for you.

If you have a Windows operating system and Java is available and enabled in your browser, the Java applet will automatically load and a Java security window will appear. For maximum security, all **Java** applets are **digitally signed** by Thawte/VeriSign. Click **“Yes”** or **“Always”** when asked.

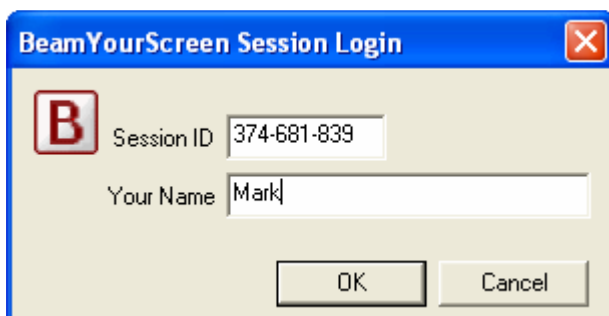


Upon confirmation, BeamYourScreen will start within a few seconds. The following progress bar will appear.



If you don't have Java, you can join the session by clicking the link below the progress bar.

During session login, you will be asked to enter the **Session ID** and **Your Name**. Sessions may be password-protected. In this case, you will also be asked to provide a **Session Password**.



# BeamYourScreen – Tutorial for Guests


---

**Mac** and **Linux** users can join sessions using a signed Java applet and a standard Internet browser. Our Intelligent Session Login™ automatically detects your operating system and selects the appropriate Java applet. You will be asked to enter the **Session ID**, **Your Name**, and the **Session Password** (if specified). Click **Join Session** and “**Yes**” or “**Always**” when asked.

Note: We recommend Java for Windows, Mac and Linux users. Our Intelligent Session Login™ automatically detects your operating system. Please enable Java and JavaScript in your browser. If you don't have Java, you can go to [www.Java.com](http://www.Java.com) and install Sun's latest Java technology for free. You can either use a signed Java applet to connect or you can manually download and run a tiny Windows application. In either case, nothing is installed on your computer.

## *During a Session*

### Watch

Upon joining a session, a window with the presenter's computer screen will open. The red  represents the presenter's mouse cursor. If the presenter's screen resolution is larger than yours, you can zoom the screen by right-clicking your mouse anywhere in the window.



### Point

If the presenter has activated the pointer, you can click anywhere on the presenter's screen and a pointer with your name will appear for a few seconds.



### Control

The presenter can give you remote keyboard and mouse control to jointly work on documents and applications.

# BeamYourScreen – Tutorial for Guests

---



## Present

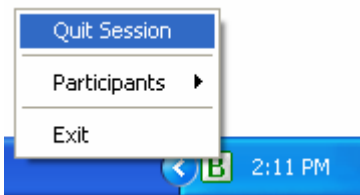
The presenter can also make you the presenter. You will be asked to confirm before you show your screen. When you click “Yes”, you will become the presenter.



Note: Please read the tutorial for hosts to learn more about the features available to presenters.

## Quit a Session

To quit a session, you can either click the  in the window showing the host’s screen or click the  icon in your system tray and select Quit Session.



## Support

We provide answers to the most frequently asked questions in the FAQ section on our home page. In addition, we offer support by email, phone and chat. Should you have any questions, please contact us.

FAQ: [www.BeamYourScreen.com/FAQ](http://www.BeamYourScreen.com/FAQ)

Email: [support@BeamYourScreen.com](mailto:support@BeamYourScreen.com)

Phone: +1 (310) 439-3239

Chat: [www.BeamYourScreen.com/chat](http://www.BeamYourScreen.com/chat)